



**ANVIL**

**MWA1100**

**Commercial Microwave Oven**

**Installation, Operation**

**and Care Manual**

MANUFACTURING  
SINCE 1966

THE CHEFS COMPANION

## Anvil imported and distributed by

International Catering Equipment

Unit B2, 6-10 Durdans Avenue, Rosebury NSW 2018 Australia

Ph: +61 2 8372 0800

[www.internationalcatering.com.au](http://www.internationalcatering.com.au)

**Before operating this oven, please read these instructions completely.**

**For service enquiries please contact either your supplier or International Catering Equipment on (02) 8372 0800.**

**Please examine the oven after unpacking to ensure no damage has occurred in transit.**

**In particular to the door and power lead.**

## TABLE OF CONTENTS

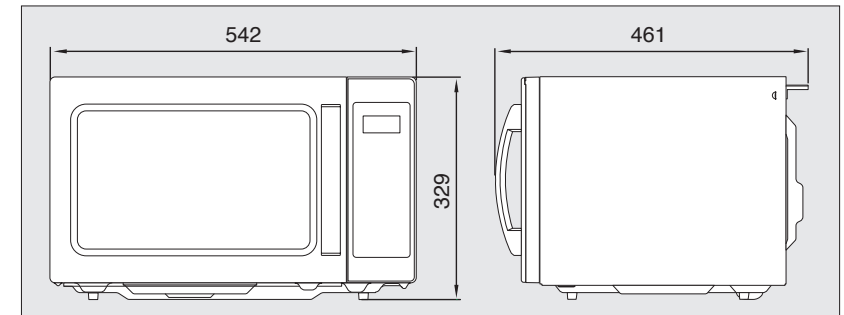
Specifications .....	1
Precautions to avoid possible exposure to excessive microwave energy .....	1
Installation .....	2
Features diagram .....	3
Operation procedure.....	5
Controls .....	6
Time defrosting.....	6
Cooking in one stage.....	6
Memory function.....	7
+30 Sec .....	8
Check function.....	8
Double quantity function.....	8
Child safety lock .....	9
Power save mode.....	9
Mute function.....	9
To stop the oven while the oven is operating .....	9
Error messages .....	9
Safety and Usage Guidelines.....	10
Microwaving principles .....	11
How microwaves cook food.....	11
Usage Tips.....	12
Caring for your microwave oven.....	13
Arcing .....	13
Before you call for service .....	14
Disposal of used electrical & electronic equipment .....	14



## SPECIFICATIONS

POWER SUPPLY		230V~240V, 50Hz
MICROWAVE	POWER CONSUMPTION	1600 W
	OUTPUT POWER	1100 W
	FREQUENCY	2450 MHZ
OUTSIDE DIMENSIONS (W x H x D)		542mm x 329mm x 461mm
CAVITY DIMENSIONS (W x H x D)		350mm x 230mm x 357mm
NET WEIGHT		APPROX. 18 Kg
TIMER		60 min.
POWER SELECTIONS		5 LEVELS

\* Specifications are subject to change without notice.



## Precautions To Avoid Possible Exposure to Excessive Microwave Energy

- DO NOT ATTEMPT TO OPERATE THIS OVEN WITH THE DOOR OPEN.** It is important that the safety interlocks are not tampered with or modified as this may result in harmful exposure to microwave energy.
- Do not** place any object between the inside of the oven door and the front fascia of the cavity opening that may prevent the door from closing properly. Do not allow food, grease or spills accumulate in this area as this may also prevent the oven door from closing correctly.
- Should any** part of the oven door, door seals, hinges or latches be damaged the oven must not be operated until it has been repaired by a recommended qualified agent.
- It is hazardous** for anyone that is not a qualified service agent to carry out any service work on this oven. Please contact the oven supplier for your nearest qualified agent.
- Please read** user instructions prior to using this oven and all users are trained in the safe operation of the oven.

## INSTALLATION

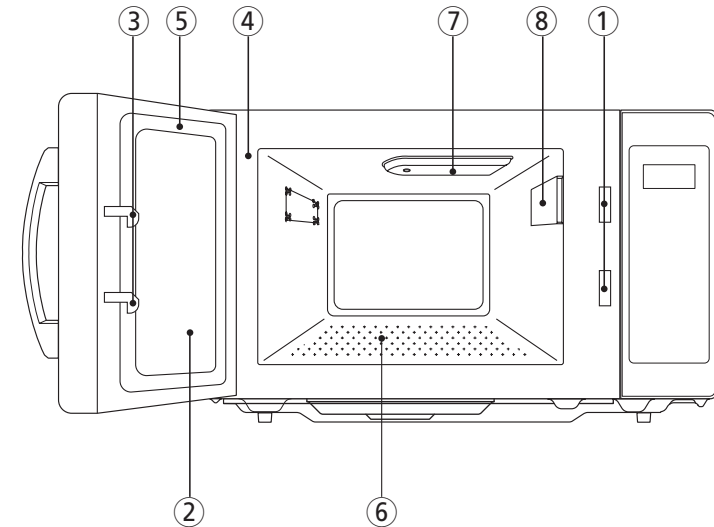
1. The oven should be positioned on a secure flat surface and is designed for countertop use only.
2. Avoid positioning the oven higher than bench top height. ie head height, as hot foods & liquids can easily be spilled onto the user. It also leads to excessive wear to the door and hinges.
3. Avoid positioning below bench height as this prevents possible damage due to users using excessive force when closing the door. ie. using their foot or leg to close the door.
4. Away from other appliances such as dishwashers, cooktops, toasters or any other such appliances that cause steam or heat to effect the oven.
5. Away from taps, sinks or any other location where liquid splashes can effect the oven.
6. Away from radio and TV sets as interference may occur when in close proximity.
7. Allow sufficient ventilation to prevent the oven from overheating. Allow 15cm clearance from the sides, rear and top of the oven.
8. Do not operate the oven if it is colder than the ambient room temperature (This may occur during delivery in cold weather). Allow the oven to reach room temperature before operating.
9. Ensure oven is connected to the recommended specified power supply.

## POWER SUPPLY REQUIREMENTS

### Improper Use Of The Oven Can Cause Serious Risk Of Electric Shock. Important guidelines are provided below.

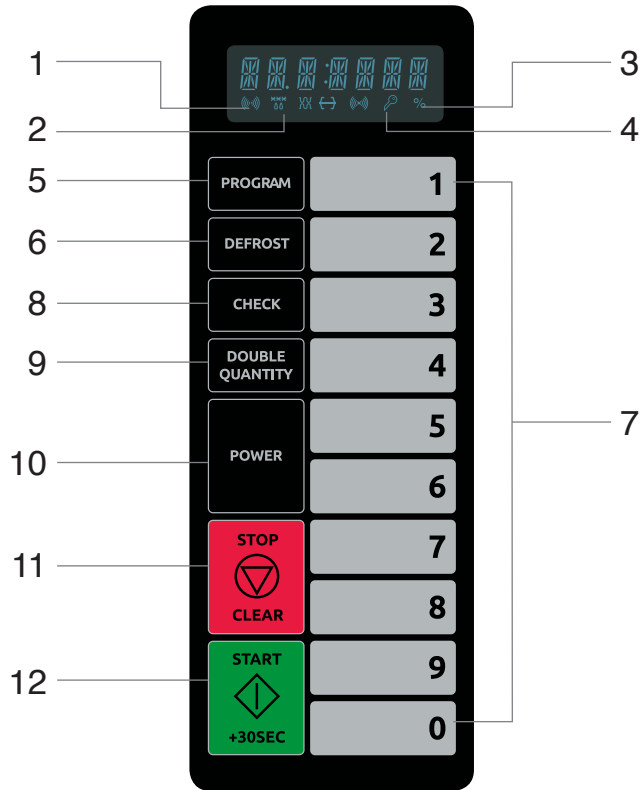
1. The oven requires a 230-240 Volt, 50Hz, 10amp power supply.
2. The oven is fitted with a 3 pin Australian Standard earth plug top.
3. This appliance must be earthed. In the event of an electrical short circuit the earthing reduces the risk of electric shock by providing an escape wire for the electric current. The oven is supplied with a power cord with an earthed plug top. Consult a qualified electrician if the earthing instructions are not fully understood or if doubt exists that the appliance is correctly earthed.
4. If it is necessary to use an extension lead use only a 3 wire earthed extension lead. The marked rating of the extension lead should be equal to or greater than the electrical rating of the oven.
5. If the power lead or plug is damaged in any way do not use the oven. Please contact your supplier for the nearest qualified repairer to repair the oven.

## FEATURES DIAGRAM



- |                                                                                                                                            |                                                                               |
|--------------------------------------------------------------------------------------------------------------------------------------------|-------------------------------------------------------------------------------|
| ① <b>Safety Interlock System.</b>                                                                                                          | ⑤ <b>Door Seal</b> - Prevents microwave leakage.                              |
| ② <b>Door Viewing Screen</b> - Allows viewing of food. The screen is designed so that light can pass through but not the microwave energy. | ⑥ <b>Plate Tray</b> - Made of special heat resistant ceramic.                 |
| ③ <b>Door Hook</b> - When door is opened, the door hook stops the oven operation.                                                          | ⑦ <b>Stirrer Cover</b> - This is located on the ceiling with the stirrer fan. |
| ④ <b>Oven Cavity.</b>                                                                                                                      | ⑧ <b>Inlet Cover</b> - Protects the air hole from splashes of cooking foods.  |

## FEATURES DIAGRAM (continued)



- ① **MICROWAVE** indicator, showing microwaving in progress.
- ② **DEFROST** indicator, showing defrosting in progress.
- ③ **PERCENTAGE** of power indicator.
- ④ **CHILD LOCK** indicator.
- ⑤ **PROGRAM** - Used to save cooking data.
- ⑥ **DEFROST** - Used to defrost foods for time.
- ⑦ **TIME SET PAD** - Used to set the cooking time.
- ⑧ **CHECK** - Used to check cooking data.
- ⑨ **DOUBLE QUANTITY** - Used to extend programmed cooking time.
- ⑩ **POWER** - Used to set power level.
- ⑪ **STOP/CLEAR** - Used to stop the oven operation or to delete the cooking data.
- ⑫ **START /+30SEC** - Used to start the oven and also used to set a reheat time.

## OPERATION PROCEDURE

This section includes useful information about oven operation.

1. Plug power supply cord into a standard 3- pronged 230V~240V, 50Hz power outlet.
2. After placing the food in a suitable container, open the oven door and put it on the glass tray. The glass tray must always be in place during cooking.
3. Shut the door. Make sure that it is firmly closed.
4. Set required program and time, then touch start.
5. Once cooking is complete, take care removing container as it will be hot.

- 1 The oven light is on when the microwave oven is operating or the door is opened.
- 2 The oven door can be opened at any time during operation by opening the door. The oven will automatically shut off.
- 3 Each time a pad is touched, a BEEP will sound to acknowledge the touch.
- 4 The oven automatically cooks on full power unless set to a lower power level.
- 5 The display will show ":0" when the oven is plugged in.
- 6 When the STOP/CLEAR pad is touched during the oven operation, the oven stops cooking and all information retained. To erase all information, touch the STOP/CLEAR pad once more. If the oven door is opened during the oven operation, all information is retained.
- 7 If the START pad is touched and the oven does not operate, check the area between the door and door seal for obstructions and make sure the door is closed securely. The oven will not start cooking until the door is completely closed or the program has been reset.

## WATTAGE OUTPUT CHART

• The power-level is set by touching the POWER pad. The chart shows the display, the power level and the percentage of power.

Touch POWER pad.	Power Level (Display)	Approximate Percentage of Power
once	100	100%
twice	80	80%
3 times	60	60%
4 times	40	40%
5 times	20	20%

## CONTROLS

### TIME DEFROSTING

When DEFROST is selected, the automatic cycle divides the defrosting time into periods of alternating defrost and stand times by cycling on and off.

DEFROST	1. Touch DEFROST pad.	The DEFROST indicator lights and " : 0" is displayed.
	2. Touch number pads for the desired defrosting time.	The display will show the numbers you pressed in the order you touched.
	3. Touch START pad.	<div style="border: 1px solid black; padding: 5px;"> <b>NOTE:</b> Your oven can be programmed for 60 minutes.(60:00)                 </div>

When you touch START pad, the DEFROST indicator lights to show the oven is in the DEFROST mode. The display counts down the time to show you how much defrosting time is left in the DEFROST mode. The oven beeps during the defrosting cycle to signal that the food needs to be turned or rearranged. When the defrosting time ends, you will hear 3 beeps.

### COOKING IN ONE STAGE

POWER x3	1. Touch POWER pad. (Select desired power level.)	The MICROWAVE and % indicators light. The display will show what you touched.
	2. Touch the number pads for the cooking time.	This example shows power level 60. The display will show the numbers you pressed in the order you touched.
	3. Touch START pad.	<div style="border: 1px solid black; padding: 5px;"> <b>NOTE:</b> Your oven can be programmed for 60 minutes. (60:00) but, in case of full power(100%), maximum time is 20 minutes. (20:00)                 </div>

When you touch START pad, the MICROWAVE indicator lights to show the oven is cooking. The display counts down the time to show how much cooking time is left. When the cooking time ends, you will hear 3 beeps.

**NOTE:** Using lower power levels increases the cooking time which is recommended for foods such as cheese, milk and slow cooking of meats.

### MEMORY FUNCTION

This microwave oven has 20 programmable pads (1~20).

PROGRAM	1. Touch PROGRAM pad.	The display will show "PROGRAM".
	2. Touch the NUMBER pad to be programmed. (ex. number pad 1)	The display will show "PROG-01". To program pads 11 to 20, touch number pad twice rapidly. (ex. to program pad 11, touch number pad 1 twice rapidly.)
	3. Touch POWER pad. (Select desired power level.)	The MICROWAVE and % indicators light.
	4. Touch the NUMBER pads for cooking time.	The display will show what you touched.
	5. Touch START pad to save cooking time and power level.	The display will show "STAGE-2" and long beep sounds.
	6. Touch STOP/CLEAR pad.	When you touch STOP/CLEAR pad, MEMORY function ends.

**NOTE 1:** If you want cooking in two or three stage, repeat step 3~5 once or twice, and display will show "STAGE-2" or "STAGE-3". After touching START pad to save cooking time and power level in 3-stage, you can see "- END -" on the display.

**NOTE 2:** Programs 1~10 are already programmed from the factory as shown below.

After programming is finished, just touch the NUMBER pad of the memory number you want to select. To select the memory number 11 to 20, touch the number pad twice rapidly. Then the oven will automatically start heating according to the pre-programmed cooking time and power level.

#### \* Preprogrammed Cooking Times and Power Level

Pad	Cooking Time	Power Level
1	10 sec.	100 %
2	20 sec.	100 %
3	30 sec.	100 %
4	45 sec.	100 %
5	1 min.	100 %
6	1 min.30 sec.	100 %
7	2 min.	100 %
8	3 min.	100 %
9	4 min.	100 %
10	5 min.	100 %

### START / +30 SEC

START / +30 SEC allows you to reheat for 30 seconds at 100% (full power) by simply touching the START / +30 SEC pad.

By repeatedly touching the START / +30 SEC pad, you can also extend reheating time to 5 minutes by 30 second increments.

#### START / +30 SEC

1. Touch START / +30 SEC pad. When you touch START / +30 SEC, ":30" is displayed.  
The oven will start immediately. It will add 30 seconds to the time counting down each time the pad is touched.

### CHECK FUNCTION

This feature allows you to check the programmed cooking time and power level.

#### CHECK

1. Touch CHECK pad. The display will show "CHECK".
2. Touch the NUMBER pads which you want confirmation. ex)5 The display will show "PROG-05".

The display will show cooking time, power level each stage.  
If you want to end, touch STOP/CLEAR pad.

### DOUBLE QUANTITY FUNCTION

This feature allows you to extend programmed cooking time to heat double quantities temporarily. The maximum double quantity heating/cooking time cannot exceed the times below;  
Maximum cooking/heating time at 100% power is 20 minutes.  
Maximum cooking/heating time is 60 minutes when less than full power (100%).

#### DOUBLE QUANTITY

1. Touch DOUBLE QUANTITY pad. The display will show "DOUBLE".
2. Touch the NUMBER pad. (ex. number pad 1) The display will show "PROG-01".  
To select pads 11 to 20, touch number pad twice rapidly.  
(ex. to select pad 11, touch number pad 1 twice rapidly.)  
After 1.5 seconds, the oven automatically start cooking.

### CHILD SAFETY LOCK

The safety lock prevents unwanted oven operation such as by small children.

To set, press and hold STOP/CLEAR for 3 seconds, LOCK indicator lights.

To cancel, press and hold STOP/CLEAR for 3 seconds, LOCK indicator goes off.

### POWER SAVE MODE

This function is used for saving energy.

To set, press and hold CHECK pad for 3 seconds. The oven will beep and nothing appears in the display. Now the oven is in power save mode.

To operate the oven in power save mode, press any pad. Then " : 0" will show and the operation of all function key will be same as in normal mode.

If there is no operation within 10 seconds in clear mode or while manipulating the key, all the contents of display will disappear.

To cancel, after press any pad, press and hold CHECK pad for 3 seconds.

Then the oven is again available for normal use.

### MUTE FUNCTION

To set, press and hold DOUBLE QUANTITY pad for 3 seconds.

The display will show "MUTE" for 1 second.

Buttons will no longer beep when pressed.

To cancel, press and hold DOUBLE QUANTITY pad for 3 seconds.

### TO STOP THE OVEN WHILE THE OVEN IS OPERATING

1. Press STOP/CLEAR pad.
  - You can restart the oven by touching START pad.
  - Touch STOP/CLEAR once more to erase all instructions.
2. Open the door.
  - You can restart the oven by closing the door and touching START.

**NOTE:** Oven stops operating when door is opened.

### ERROR MESSAGES

<b>E10</b>	<ul style="list-style-type: none"> <li>• "E10" message occurs when the total sum of the stage cooking time is greater than 20 minutes in full power or 60 minutes in other power levels.</li> <li>• Press STOP/CLEAR key and try again.</li> </ul>
<b>E20</b>	<ul style="list-style-type: none"> <li>• "E20" message occurs when EEPROM is not able to read cooking data from it's memory or write cooking data on it's memory.</li> <li>• Unplug the power and call for service.</li> </ul>

## Safety & Usage Guidelines

The following guidelines are important to prevent fire, burns, unnecessary maintenance and ensure high performance and reliability from your oven. Read carefully and keep for future reference.

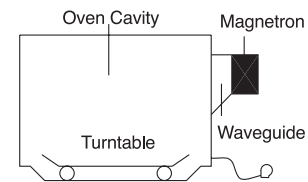
1. **Do not use** the oven for any reason other than food preparation. ie Drying clothes or paper or heating of any other non food items is dangerous.
2. **Do not use** the oven when empty, this will cause unnecessary damage to the oven.
3. **Do not use** the oven cavity to store items. ie Books, paper towels, cookware, etc
4. **Make sure** to remove all air tight lids or caps before heating product in containers, bottles, jars, etc in the oven.
5. **Do not use** recycled paper products in the oven. They may contain impurities which could cause sparking or fire.
6. **Do not use** metal inside the oven. This can spark or arc and damage the oven.
7. **Do not** pop popcorn unless using a microwave specified popcorn container or the popcorn is in a commercially prepared microwave popcorn bag. Do not heat popcorn for longer than the manufacturers guidelines as this can cause fire in the oven.
8. **Do not** cook or heat food product that contains a membrane such as egg yolks, potatoes, fish eyes, chicken liver, etc. without first piercing them several times with a fork.
9. **Do not** heat or cook eggs in their shell. This may result in an explosion that may damage the oven beyond repair and cause injury.
10. **Never** heat oil or try to deep fry in a microwave oven. This may result in overheating and fire.
11. **Always** test the temperature of heated or cooked food before consuming. Microwave heated food does not reach its maximum temperature until after the oven has stopped. This could be anywhere up to 10% longer than the actual heating or cooking time in the oven.
12. Liquids such as water, coffee & tea can be overheated beyond the boiling point with no visible signs of boiling due to surface tension of the liquid. Visible signs of bubbling may not always be present. **THIS MAY LEAD TO HOT LIQUID SUDDENLY BOILING OVER WHEN THE SURFACE TENSION IS RELEASED.** ie Putting a spoon or utensil in the liquid.
13. **To prevent injury** when heating liquids:
  - a. Do not overheat liquid.
  - b. Stir liquid both before and half way through the heating cycle.
  - c. After the cooking time has stopped allow the liquid to stand in the oven for a short time before removing it.
  - d. Use extreme care when inserting a spoon or utensils in hot liquid.
14. **Ensure** only dishes, containers, utensils, etc that are clearly marked microwave safe are used in the oven. Non microwave safe dishes, etc may melt, cause fire, arc or spark or create toxic fumes.
15. **Use caution** when using plastic microwave safe dishes as they may still melt if food is overheated.
16. **Always** stir and test the temperature of baby bottles before serving.

## MICROWAVING PRINCIPLES

Microwave energy has been used to cook and reheat food since early experiments with RADAR in World War II. Microwaves are present in the atmosphere all the time, both naturally and by man made sources. Man made sources include radar, radio, television, telecommunication links and mobile devices.

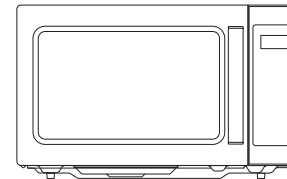
## HOW MICROWAVES COOK FOOD

The microwave oven is a Group 2 ISM equipment in which radio frequency energy is intentionally generated and used in the form of electromagnetic radiation for the treatment of material. This oven is a Class B equipment suitable for use in domestic establishments and in establishments directly connected to a low voltage power supply network which supplies buildings used for domestic purposes.



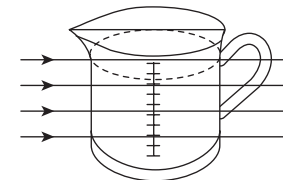
In a microwave oven, electricity is converted into microwave by the MAGNETRON ENERGY.

### ► REFLECTION



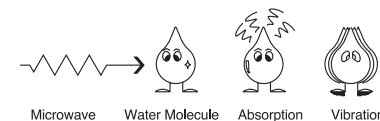
Then microwave energy passes through the cooking container to be absorbed by water molecules in the food. All foods contain water.

### ► TRANSMISSION



The microwave energy bounces off the metal walls and the metal door screen of the oven.

### ► ABSORPTION



Microwave energy causes the water molecules to vibrate which causes FRICTION resulting in HEAT. This heat then cooks the food. Microwaves are also attracted to fat and sugar particles and foods high in these will cook more quickly. Microwaves can only penetrate to a depth of 1½ - 2 inches (4-5cm) and as heat spreads through the food by conduction, just as in a traditional oven, the food cooks from the outside inwards.



## USAGE TIPS

1. Microwave safe plastic wrap is handy for maintaining moisture in food and reducing heating or cooking time, however always leave a small opening for some steam to escape.
2. Standing Time - Always allow cooked or heated food to stand after the oven has stopped running. Standing time allows the heat to finish conducting itself evenly to the centre of the product. Standing time can be up to 20% of the heating time depending on product.
3. Moisture Content - Many fresh foods such as vegetables and fruits vary in moisture throughout the season. Therefore heating times may need to be varied accordingly.
4. Heating Evenly:
  - a. Even shapes heat more evenly, a round dish heats more evenly than a square dish.
  - b. Microwave energy heats from the outside to the inside. Therefore placing thicker portions on the outside of the dish will heat more evenly.
  - c. Single items will heat more evenly than multiple items. ie a single bowl of food will heat more evenly than 2 bowls at the same time.
  - d. Spacing food apart evenly on the plate will heat faster and more evenly than food piled together.
5. Starting temperature - The colder the starting temperature the longer the heating time.

## CARING FOR YOUR MICROWAVE OVEN

1. Turn the oven off before cleaning.
2. Keep the inside of the oven clean. When food spatters or spilled liquids adhere to **oven walls**, wipe with a damp cloth. Mild detergent may be used if the oven gets very dirty. The use of harsh detergent or abrasives is not recommended.
3. The outside oven surface should be cleaned with soap and water, rinsed and dried with a soft cloth. To prevent damage to the operating parts inside the oven, water should not be allowed to seep into the ventilation openings.
4. If the Control Panel becomes wet, clean with a soft, dry cloth. Do not use harsh detergents or abrasives on the Control Panel.
5. If steam accumulates inside or around the outside of the oven door, wipe with a soft cloth. This may occur when the microwave oven is operated under high humidity conditions and in no way indicates malfunction of the unit.

### **ARCING**

***If you see arcing, open the door and correct the problem.***

Arcing is the microwave term for sparks in the oven.

Arcing is caused by:

- Metal or foil touching the side of the oven.
- Foil not molded to food (upturned edges act like antennas).
- Metal, such as twist-ties, poultry pins, or gold rimmed dishes, in the microwave.
- Recycled paper towels containing small metal pieces being used in the microwave.

## BEFORE YOU CALL FOR SERVICE

Refer to following checklist, you may prevent an unnecessary service call.

\* The oven doesn't work;

1. Check that the power cord is securely plugged in.
2. Check that the door is firmly closed.
3. Check that the cooking time is set.
4. Check for a blown circuit fuse or tripped main circuit breaker in your building.

\* Sparking in the cavity;

1. Check that utensils and containers are not metal and that dishes don't have metal trim.

If there is still a problem, contact your service centre.

**DO NOT ATTEMPT TO SERVICE THE OVEN YOURSELF!**

## DISPOSAL OF USED ELECTRICAL & ELECTRONIC EQUIPMENT



The meaning of the symbol on the product, its accessory or packaging indicates that this product shall not be treated as household waste. Please, dispose of this equipment at your applicable collection point for the recycling of electrical & electronic equipments waste. In the European Union and Other European countries which there are separate collection systems for used electrical and electronic product. By ensuring the correct disposal of this product, you will help prevent potentially hazardous to the environment and to human health, which could otherwise be caused by unsuitable waste handling of this product. The recycling of materials will help conserve natural resources. Please do not therefore dispose of your old electrical and electronic equipment with your household waste. For more detailed information about recycling of this product, please contact your local city office, your household waste disposal service or the shop where you purchased the product.



**ANVIL**

THE CHEFS COMPANION

---

---