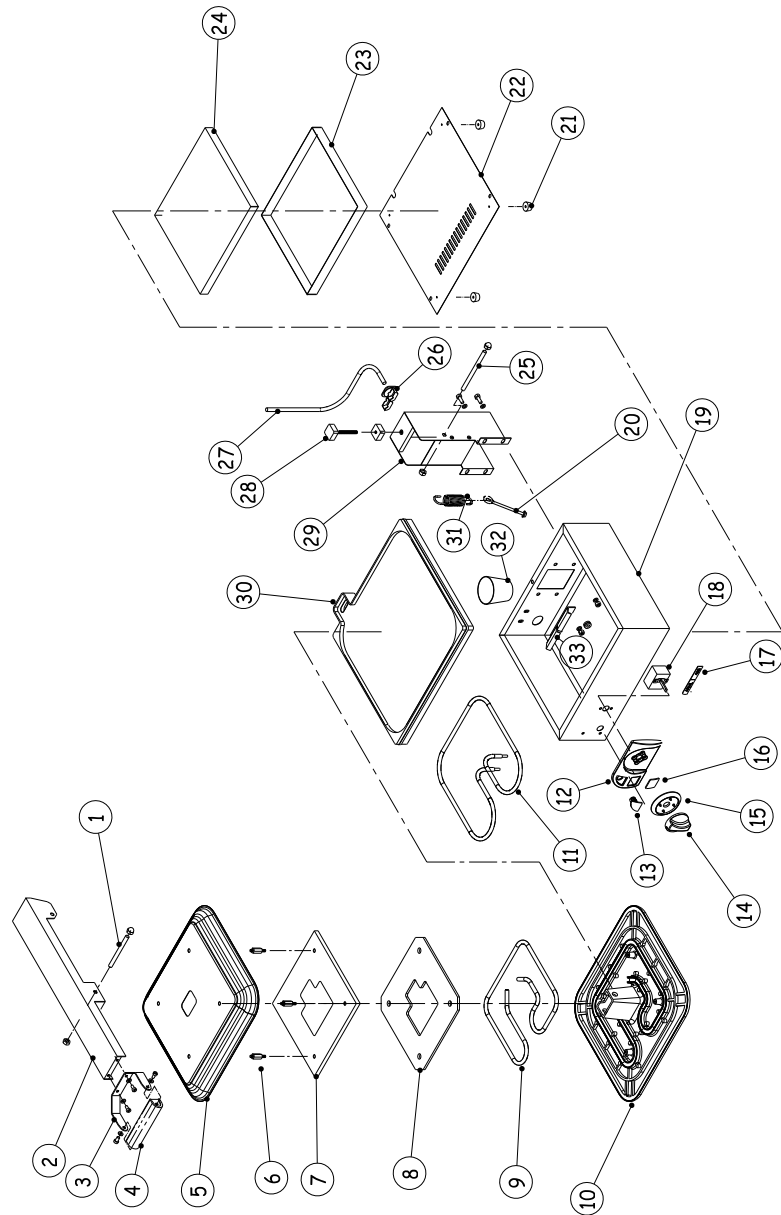


**EXPLODED DIAGRAM
SANDWICH PRESS FLAT PLATE
MODEL CODE: TSA1009 R01/TSA1309 R01**



**MODEL: SANDWICH PRESS FLAT PLATE
MODEL CODE : TSA1009 R01/TSA1309 R01**

Part No.	Description
1	TOP HINGE AXLE M8
2	9 SLICE TOASTER HANDLE
3	STAINLESS STEEL HANDLE
4	PLASTIC TOASTER HANDLE
5	PRESSED TOASTER STAINLESS STEEL LID
6	M5 HEX SPACERS
7	TOP ELEMENT COVER PLATE ADAPTOR
8	5MM MILL BOARD TOP
9	TOP ELEMENT 950W
10	ALUMINIUM TOP CASTING TEFLON COATED
11	BOTTOM ELEMENT 1200W
12	CONTROL FACIA PANEL
13	PILOT LIGHT
14	KNOB
15	BEZEL
16	CONTROL PANEL INSERT
17	ANVIL AXIS LOGO
18	THERMOSTAT
19	STAINLESS STEEL BODY
20	M5 PLATED EYE BOLT
21	SMALL RUBBER FEET
22	GALVANISED COVER PLATE
23	BOTTOM ELEMENT COVER
24	INSULATION PAD
25	HANDLE AXLE M8
26	CABLE GRIP
27	POWER CORD
28	HANDLE ADJUSTING SCREW
29	HANDLE HINGE BRACKET
30	ALUMINIUM BOTTOM CASTING TEFLON COATED
31	HANDLE SPRING
32	DRIP CUP
33	SPRING BRACKET